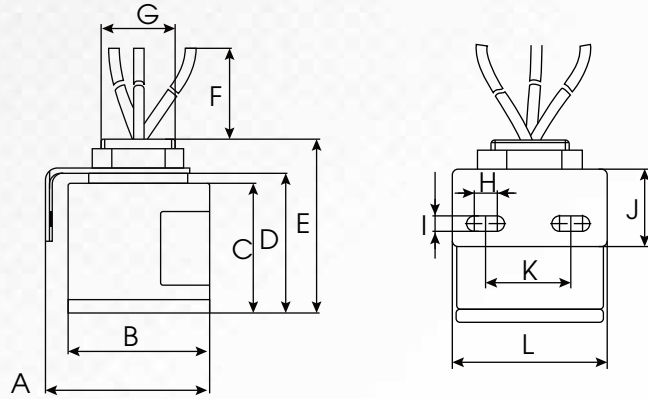




BTU RESEARCH™

SURGE PROTECTIVE DEVICE

BTU25C SERIES



DIMENSIONS (MM)

A	B	C	D	E	F
44.0±1.0	∅38.0±1.0	37.0±1.0	40.0±1.0	49.0±1.0	150.0±5.0
G	H	I	J	K	L
M20 x 1.5	6.0±0.5	4.2±0.5	20.0±1.0	22.0±1.0	40.0±1.0

The lead length "F" can be customized as required.

MODEL	Max. Continuous Operating Voltage		Nominal/Max. Discharge Current (8/20 μs)		Voltage Protection Rating Per L-N, L-G, N-G (@6kV/3kA)	Measured Limiting Voltage (L-N @ In)	Rated Current	External Overcurrent Protection
	MCOV		<i>I_n</i>	<i>I_{max}</i>				
	(Vac)		(kA)	(kA)				
BTU 25C 277 LH	320		10	25	1200	1590	-	32 A
BTU 25C 277 LHT	320		10	25	1200	1590	15	32 A

KEY FEATURES

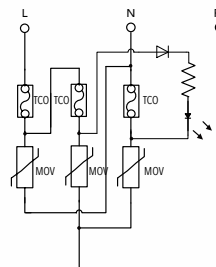
- IP66
- Differential/Common Mode Protections
- Installed as a Module Inside or Outside Power Supply
- LED Status Indication
- RoHS Compliant

STANDARDS

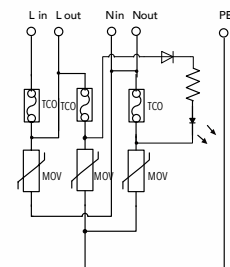
- UL 1449 4th Edition, 4CA (Field or Factory Installed)
- EN 61643-11
- IEEE C62.41.2

APPLICATIONS

- LED Driver
- AC Power
- Uninterruptable Power Supply (UPS)



BTU 25C 277 LH Parallel



BTU 25C 277 LHT Series

APPLICATION NOTES

- Do not use solvent such as acetone to clean the products to avoid destroying the encapsulated material
- Open Circuit Voltage (Uoc): 20kV per EN 61643-11
- Do not shake SPD when assembling to avoid mechanical damage
- Good ground is required (≤ 25 Ohms) when installing these SPD's